

◀ KENTAUR^{IMPEX}

ПОДРУЖНИЦА **ISKRA**

MACHINERY

A close-up photograph of industrial machinery, likely a grinding or cutting tool, in operation. A bright, intense burst of orange and yellow sparks is being generated from the point of contact between the tool and the workpiece. The sparks are radiating outwards in all directions, creating a dynamic and energetic scene. The background is dark and industrial, with various metal components and structures visible. The word "MACHINERY" is overlaid in a bold, white, sans-serif font on the left side of the image.



We LISTEN to your ideas



We 3D-MODEL your dream...



We PRODUCE it in our own plant



We TEST ASSEMBLE our product



We RAISE UP your dream

AUTOMATIC & HANDY SAND BLASTING ANTI CORROSIVE PROTECTION



Name: Automatic sandblasting unit
Type: OMSG
Manufacturer: OMSG Villa Cortese-Italy
Plate working space 600/3000
Beam working space 590/2200
Material Sis-SA 2.5
Max speed : 12m 5 min
Year of production 1981
Pieces: 1



Name: Kovinarska
Type: 293.K
Manufacture: Tovarna industrijske
opreme in Konstrukcije – Slovenija
Reservoir type: UI Air pressure: 8 Pa.
Work pressure: 10.4 pa.
Reservoir capacity: 0.015 m³
Year of production 1989
Pieces: 2



*Hudraulic cutting & bending
section*



Name: SAN MACHINE
Type: MG 31/16-20
Manufacturer:
Maximum width: 3100mm
Max material tick Dmax=12mm
Year of production 1981
Pieces: 1

v



Name: BENDING MACHINE
Type: Tip P1175
Manufacturer: TELEMÉQUANIQUE
Max length 4050 mm
Max thickness 18mm
Year of production 1996
Pieces: 1



Name: SAN MACHINE
Type: MG 31/16-20
Manufacturer: JELSINGRAD
Max width B = 3100 mm
Max material tick Dmax= 20mm
Year of production 1981
Pieces: 1

ROLING BENDING MACHINE OF PLATES AND PROFILES



STANDARD PRODUCT



Name: **Bending machine-Round**

Type: **DOMBRE**

Manufacturer: **Le Mense-Belgie**

*Bmax-*4000 mm of steel plate *Dmax-*32 mm
of steel plate

Hmax- 160 mm of sections

Year of production 1954

Pieces: 1



Name: **Bending machine**

Type: **MASSA**

Manufacturer: **MASSA**

Max.Leight: 3000 mm

t = 6 mm

Year of production 2002

Pieces: 1



Name: Plasma Star
Type: PSV 30/60
Manufacture:
 Max 60 A
 Handy Plasma cutting mashie
 Year of production 2002
 Pieces: 1



Name: JACKLE
Type: Power Plasma
Manufacturer: Germany
 Max:20A/88V-160A/144V
 Handy Plasma cutting machine
 Year of production 2007
 Pieces 2



Name: Equipment for predeformation
Type: Raddrizatrice 2000x30
Manufacturer: Di Parmigliari-Italy
 Max width 2000 mm
 Max thickness 30 mm
 Year of production 1981
 Pieces: 1



Name: Radial console driller
Type: TRB 5A
Manufacturer: TIGAR-SARTAH SCIG
 Max diameter of holes
 F max=50 mm 1 holes/min
 Year of production 1981
 Pieces 3



SUPPORTING MACHINES AND TOOLS



Name: Punching Machine
Type: 320
Manufacture: ITALY
 Max FI – 32 mm
 Year of production 1996
 Pieces: 1



Name: ELECTRIC SAW
Type: UMSY 1010
Manufacturer: Tyrkey
 Cutting capacity: 15-105m/min
 Year of production 2002
 Pieces 1

Name: ELECTRIC SAW
Type: PBR 250x45°/350x90°
Manufacturer: CAMAK
 Cutting capacity: ?
 Year of production 2002
 Pieces 1



Electric SAW

FICEP driller & SABI saw cutter CNC system
 For drilling and cutting steel profiles operation can be done on welded or hot rolled HEA,HEB,U profiles also have complete support of CNC transpotrer

Name: **SAW FOR STEEL**
Type: **PBR 700x45°/1300x90°**
Manufacturer: **SABI-SPAIN**
 Angle cutter -60 to +45 degree
 Max vol. of cutting 1350x600 mm
 Speed 18-80 m/min
 Year of production 2005
 Pieces: 1



Name: **Machine for steel profiles drilling**
Type: **FICEP**
Manufacturer: **GENERAL-MOTORS**
 Hydraulic automatic multi-axes column driller Fmax= 32mm
 Year of production 1981
 Machine has been upgraded to CNC in 2005
 Pieces: 1

Name: Drilling line with pusher
Type: ST3/1200
Manufacturer: SABI
Max. dimensions of working space: 4400 x 1700 x 2800 mm



Name: Drilling and cutting
Type: HYD 110-Geka
Manufacturer: GEKA-Spain
Max. dimensions of working space: to Ø40mm, thickness of plates 35 mm, curcle cutting M60



CNC Punching machine



Name: CNC PUNCHING MACHINE
Type: PAXY 1500, PUMA 110
Manufacturer: GEKA - SPAIN
Work space: 750 x 1515mm
Max thickness: 28 mm with punchin
tool Ø 28 mm
Year of production 2007
Pieces: 1



Name: **Automatic gas cutting with photocell**
Type: **CORTA**
Manufacturer: **Messer Frankfurt-Germany**
 Cutting area 3000x 18000
 Max thickness 250 mm Average cutting speed: 34 cm/min
 Year of production 1981
 Pieces: 1

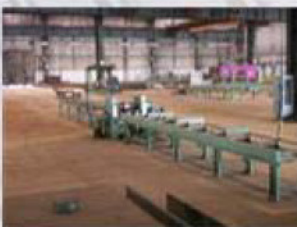


Name: **Plasma cutting machine PANTOGRAPH**
Type: **Fine focus 800** *Manufacturer:* **Kjellberg**
 Germany Max 180 mm
 average speed 200-1600 mm/ min
 Cutting area 24000x 6000 mm
 CNC Plasma and Oxygen cutting
 Year of production 2006
 Pieces: 1



Name: **Automatic gas cutting**
Type: **SH - 5600**
Manufacturer: **Messer Frankfurt-Germany**
 Max. number of burners: 8 pic.
 Min. distance between burners: 40 mm
 Max lenght: 26 m
 Max width: 4m
 Average cutting speed: 0,34m/min
 Year of production 1981
 Pieces: 2

SECTION OF AUTOMATIC PLASMA & GAS CUTTING OF STEEL PLATES & TREATMENT OF THE EDGES



Name: **Equipment for predeformation**
Type: **IP 700x35 max; 150x10 min**
Manufacturer: **Di Parmigiari-ItalyB**
 max- 700 mm Max width
 Dmax – 35 mm Max thickness
 Leigh- no limit
 Speed: 14 m per min
 Year of production 1981
 Pieces: 2



Name: **Edges treatment equipment**
Type: **HHP - 12**
Manufacturer: **HULIN TOS**
 Max lenght: 1400 mm
 Max lamella height: 80 mm
 Max speed: 12m/min

ANGLE ROTATOR 40 t Capacity



System for manufacturing welded I
profile MASTER , MH 55 ,
ROTATOR whit RAILROAD support



Name: Arc welding machine MASTER

Type: ARMCO

Manufacturer: ARMCO-Genova Italy

Accessories: Aggregates (pcs=2) "IDEAL ARC" DC-1500 A,
"The Lincoln Electric Company" -Cleveland, Ohio- USA,

Steel profile dimensions: 700/200/3000

Year of production 1981

3 pairs (Total 6 pieces)



Name: Arc welding machine

Type: MH-55/4

Manufacturer: ARMCO-Genova Italy

Accessories: Aggregates (pcs=2) "IDEAL ARC" DC-1500 A,
"The Lincoln Electric Company" -Cleveland, Ohio- USA, Steel profile
dimensions: H/4200- V/4500

Year of production 1981

Pieces : 3

SUBM ARC Welding Machines MASTER , MH 55 , LAF , whit LINCOLN aggregates



Name: Arc Welding Machine
Type: MH 55/4
Manufactured: AMRCO-Genova Italy
Accessories: Aggregates (pcs=2) "IDEAL ARC" DC=1500 A
"The Lincoln Electric Company"-Cleveland, Ohio, USA
Steel profile dimension: H/4200 - V/4500
Travelling: ??? = 60??
 Height = 4,2 m
 Vertical = 4,3m
Year of production 1981
Pieces: 2+1



Name: Arc welding machine MASTER
Type: ARMCO
Manufacturer: ARMCO-Genova Italy
Accessories: Aggregates (pcs=2) "IDEAL ARC" DC-1500 A,
"The Lincoln Electric Company" -Cleveland, Ohio- USA,
Steel profile dimensions: 700/200/3000
Year of production 1981
Pieces: 6



Name: Automatic welding machine using powder LAF
Type: Lincoln Electric NA 35
Manufacturer: The Lincoln Electric- France
Accessories: Aggregates (pcs=2) "IDEAL ARC" DC-1500 A,
"The Lincoln Electric Company" -Cleveland, Ohio- USA,
Steel profile dimensions: no limits
Year of production 1981
Pieces: 2



KEMPPI
The Joy of Welding



Name:Tlg mashine
Type:Kemppei pro 5500
Manufacture:KEMPPI- Finland
Max Amp=500 A
Max thicknes of wire 0.8 to 1.6
Year of production 2005

Name:MIG process welding machine
Type:Kemppei 5500
Manufacture:KEMPPI- Finland
Max Amp=500 A
Max thickness of wire 0.8 to 1.6 mm
Gas 100% CO2 or 82% Ar +18% CO2
Year of production 2005
Pieces : 44

Compressor station whit reservoir



Name: **Atlas - Copco**
Type: **4352**
Manufacture: **Atlas - Copco**
Capacity 25 m³/h
Compressor 4352
Work pressure 9 atm.
Year of production 2003
Number of compressors: 2



Name: **Fagor – Smederevo**
Type: **KS – 707 – 2**
Manufacture: **OOOR – Inzenjering Smederevo**
Capacity 25 m³/min
Compressor ES 707 – 2
Work pressure 9 atm.
Year of production 1981
Number of compressors: 4



Name: **Gas Reservoir**
Type: **118.29**
Manufacture: **Heroj – Srba Smederevo**
Work pressure 10 atm.
Capacity 15 m quick
Year of production 1981

Automatic Sand-blasting Unit whit preheating of wet material



Name: Automatic sandblasting unit

Type: OMSG

Manufacturer: Villa Cortese-Italy

Plate working space 600/3000

Beam working space 590/2200

Material Sis-Sa 2.5

Max Speed 12m 5min

System for Handy Sand Blasting whit Automatic collector of Dust



Name: **KOVINARSKA**

Type: **293.K**

Manufacturer: **TOVARNA INDUSTRIJSKE
OPREME IN KONSTRUKCIE - SLOVENIJA**

Reservoir type: UI Air pressure 8 Pa

Work pressure: 10.4 Pa

Year of manufacture 1989

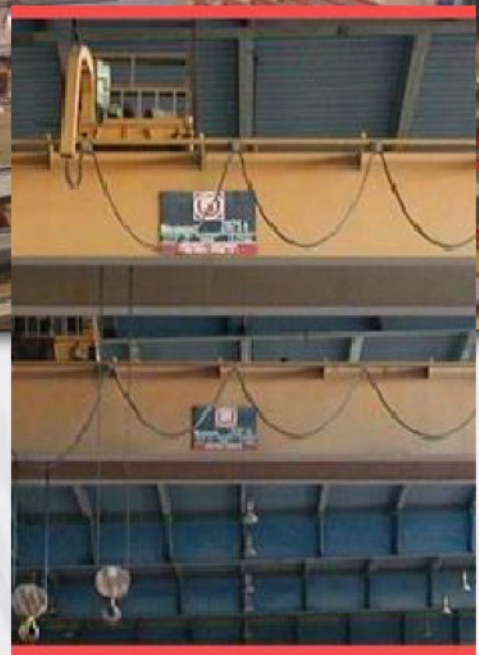
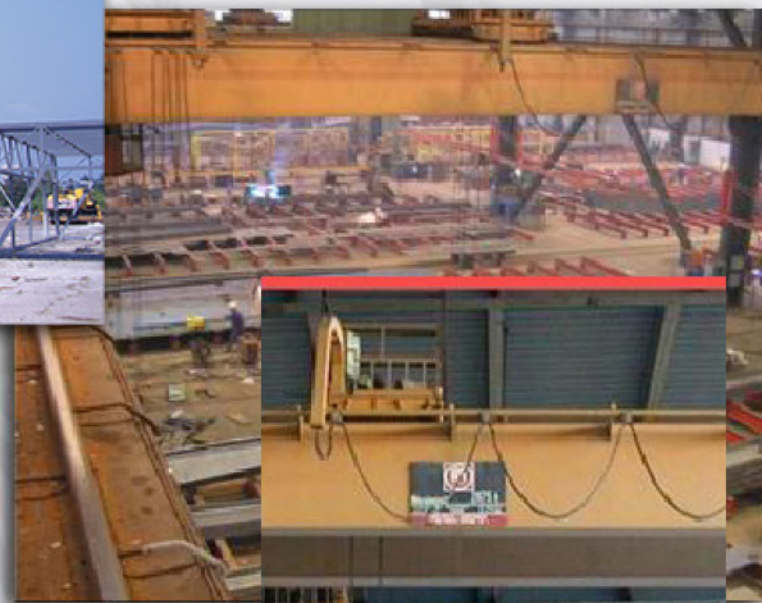
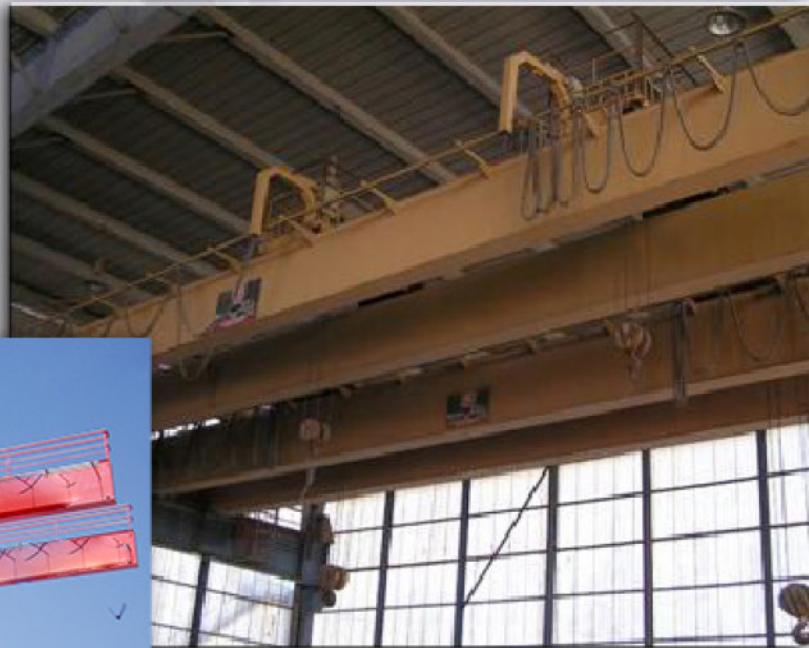
Pieces:

CRANE support

Portal cranes 2 x 8 tons



We have crane support in all area of our factory lifting power of the cranes is from 5t up to 40t



All Portal Cranes are with 2 rail

Type : 7 cranes 2x2.5t

a4 cranes 2x5t

1 crane 2x7.5t

2 cranes 2x10t

2 cranes 2x15t

2 cranes 2x20.5t

Manufacturer: Ivo Lola Ribar Zeleznik Beograd

Year of production 1981

2 portal cranes x8t

MACHINE SHOP SECTION



Name: **UNIVERSAL STRUG**
Type: **PA – B - 30**
Manufacturer: **ADA POTISJE - SRBIJA**
Max diameter of material 500 mm and 800 mm
Max length of material 3000 mm
Year of production 1961
Pieces: 1



Name: **UNIVERSAL STRUG**
Type : **US - 61**
Manufacturer: **ADA POTISJE - SRBIJA**
Max diameter of material 500 mm
Max length of material 1500 mm
Year of production 1961
Pieces: 1



Name: **SHAPING MACHINE**
Type: **MAJEVICA**
Manufacture: **BACKA PALANKA**
Max dim on work palate 700 x 700mm
Year of production 1975
Pieces: 1



Name: **FREEZE**
Type: **PHANTOM PS 43**
Manufacturer: **MZT - Skopje**
Work space: 800x250 mm
Year of production 1979
Pieces: 1

GRINDING MACHINE



Name: **Double housing surface and slideway grinding machines**

Type: **TU – N**

Manufacturer: **FAVRETTO – Italy**

max. grinding length **4000 mm**

max. grinding width **1500 mm**

max. grinding height **1500 mm**

variable speed rate **3 – 40 m/min**

Upgrade on the machine has been made in 2007

Pieces: 1



CNC Milling machine



Name: CNC MILLING

Type: MH 900c

Manufacturer: MAHO WERKZEUGMASCHINENBAU

BABEL & CO. D-8962 PFRONTEN

Upgrade of the machine has been made in 2007.

Year of production 1983

Pieces: 3

PROBE MONTAGE SECTION



We have space for Probe Montage $3 \times 2400\text{m}^2$ and all space is covered with Portal cranes

Usually in our workshop we make probe montage on the Bridge Construction, Roof construction, Process Equipment and all type of construction where is needed big precision and precise geometrical shapes



ANTI CORROSIVE PROTECTION



We have 5400 m2 covered space for painting



Our company have all necessary NDT certificates for the equipment and also for the QC personnel



QUALITY CONTROL
EQUIPMENT &
CERTIFICATES

Lifting Equipment



Manufacturer: MASA
Max Load: 800 kg
Max Height: 11 m



Manufacturer: UPRIGHT SL26SL DSL SCISSOR 4WD
Max Load: 800 kg
Max Height: 11 m



Manufacturer: LIFTLUX SL83-18 SCISSOR 4WD
Max Load: 800 kg
Max Height: 11 m



Manufacturer: T-REX 4WD
Max Load: 400 kg
Max Height: 22 m



Manufacturer: MITSUBISHI
Max Load: 4 ton.



Manufacturer: KATO
Max Load: 16 ton
Max Height: 45 m



Manufacturer: LINDE
Max Load: 7 ton.



Manufacturer: KATO
Max Load: 80 ton
Max Height: 64 m